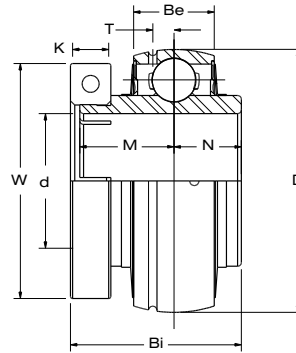


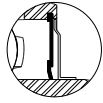
# UE 200 SERIES

Normal-Duty Ball Bearing  
Tru-Loc

**TURNER**  
Mounted Bearings



Available Seal Styles:



Standard



L3

Bearing Insert	Shaft Dia. d in. mm.	Bolt Used in. mm.	Dimensions in. mm.								Load Rating lbs. kN.		Weight lbs. kg.
			D	Bi	Be	N	M	W	K	T	Dynamic Cr	Static Cor	
UE 204-12	3/4	1/4-28	1.8504	1.2992	0.6693	0.5000	0.7205	1.606	0.374	0.1693	2,883	1,496	0.4
UE 204	20	M4 x 0.7	47.0	33.0	17.0	12.7	18.3	40.8	9.5	4.3	12.82	6.65	0.2
UE 205-14	7/8	1/4-28	2.0472	1.3937	0.6693	0.5630	0.7795	1.929	0.374	0.1575	3,155	1,810	0.5
UE 205-15	15/16	1/4-28											
UE 205	25	M4 x 0.7											
UE 205-16	1	1/4-28	2.4409	1.5669	0.7480	0.6260	0.8740	2.185	0.374	0.2087	4,377	2,569	0.7
UE 206-17	1 1/16	1/4-28											
UE 206-18	1 1/8	1/4-28											
UE 206	30	M4 x 0.7											
UE 206-19	1 3/16	1/4-28	2.8346	1.7283	0.7874	0.6890	1.0000	2.520	0.433	0.2283	5,775	3,497	1.1
UE 206-20	1 1/4	1/4-28											
UE 207-20	1 1/4	5/16-24	72.0	43.9	20.0	17.5	25.4	64.0	11.0	5.8	25.69	15.56	0.5
UE 207-21	1 5/16	5/16-24											
UE 207-22	1 3/8	5/16-24											
UE 207	35	M5 x 0.8											
UE 207-23	1 7/16	5/16-24	3.1496	1.9764	0.8268	0.7480	1.1890	2.677	0.433	0.2441	6,634	4,079	1.5
UE 208-24	1 1/2	5/16-24											
UE 208-25	1 9/16	5/16-24											
UE 208	40	M5 x 0.8	3.3465	1.9764	0.8661	0.7480	1.1890	2.913	0.433	0.2559	7,160	4,676	1.7
UE 209-26	1 5/8	5/16-24											
UE 209-27	1 11/16	5/16-24											
UE 209-28	1 3/4	5/16-24											
UE 209	45	M5 x 0.8	3.5433	2.0709	0.9449	0.7480	1.2835	3.189	0.571	0.2756	7,867	5,330	1.9
UE 210-30	1 7/8	3/8-24											
UE 210-31	1 15/16	3/8-24											
UE 210	50	M6 x 1											
UE 210-32	2	3/8-24	3.9370	2.2283	0.9843	0.8740	1.3150	3.622	0.571	0.2913	9,743	6,608	2.6
UE 211-32	2	3/8-24											
UE 211-34	2 1/8	3/8-24											
UE 211	55	M6 x 1											
UE 211-35	2 3/16	3/8-24	4.3307	2.6220	1.0630	1.0000	1.5630	4.055	0.689	0.2992	10,720	7,516	3.5
UE 212-36	2 1/4	3/8-24											
UE 212	60	M8 x 1.25											
UE 212-38	2 3/8	3/8-24											
UE 212-39	2 7/16	3/8-24	110.0	66.6	27.0	25.4	39.7	103.0	17.5	7.6	47.69	33.43	1.6